

Popular Music & Worship

SAMPLE Entry Theory Paper

Time allowed: 45 minutes

Instructions:

- Use black ink.
- Fill out required information on this cover sheet.
- Attempt to answer all of the questions.

Name: _____

Date: _____

For examiner use only:

Score / 19 Marks

Percentage %

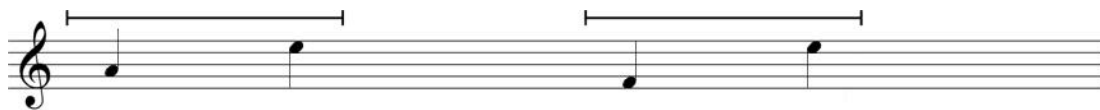
Question One

What is the word used to describe a performance by two singers?

1 mark

Question Two

Describe the following diatonic intervals.



1. _____
2. _____

2 marks

Question Three

At what frequency is the standard reference tone used to calibrate audio equipment?

- a. 20kHz
- b. 50Hz
- c. 1kHz

1 mark

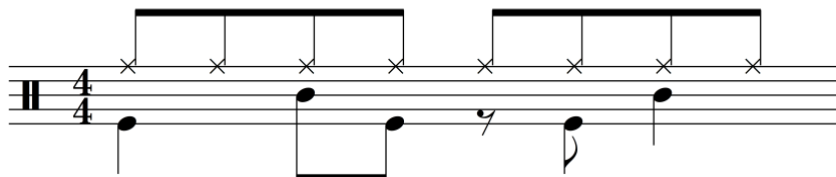
Question Four

What is an SM57?

2 marks

Question Five

Identify two of the drums used on the score below.

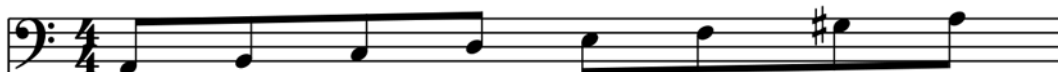


1. _____
2. _____

2 marks

Question Six

Identify the scale below.



- a. C Major
- b. G Minor
- c. A Minor

1 mark

Question Seven

Complete the bar below by filling in the gaps (marked with *) with the necessary rests.



1 mark

Question Eight

Identify the following major key signatures.



1. _____
2. _____

2 marks

Question Nine

Complete the bar below by adding the correct time signature at the beginning.



1 mark

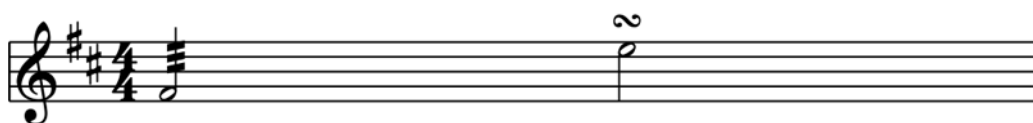
Question Ten

List two differences between 'Dynamic' and 'Condenser' microphones.

2 marks

Question Eleven

Identify the following score markings.



1. _____

2. _____

2 marks

Question Twelve

With a time signature of 4/4, how many beats are the following notes



worth?

1. _____

2. _____

2 marks